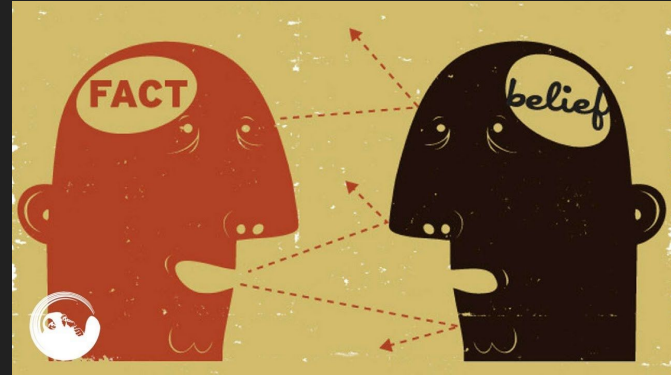


# BIAS RECAP

What is bias?

What are some examples of bias?



Why is it important to keep bias out of reporting? Is it really possible to do so?

# Examining Political Bias

America's partisan divide is well-illustrated by which news outlets people stick to.

Some news outlets have a fairly even distribution of viewers, while others (some of which are the most popular in the country) skew strongly to the right or left.

This is because certain news outlets have political bias. This is when a news source favors one political party over the other. This can be obvious, but not always.

# What are the political parties in America?

## Republican/Conservative

Conservatives believe in personal responsibility, limited government, free markets, individual liberty, traditional American values and a strong national defense. Believe the role of government should be to provide people the freedom necessary to pursue their own goals. Conservative policies generally emphasize empowerment of the individual to solve problems.

## Democrat/Liberal

Liberals believe in government action to achieve equal opportunity and equality for all. It is the duty of the government to alleviate social ills and to protect civil liberties and individual and human rights. Believe the role of the government should be to guarantee that no one is in need. Liberal policies generally emphasize the need for the government to solve problems.

## Let's look at how this is shown in media...

Grab a chromebook from the cart. We are going to look at how different news sources discuss the same issue. Go to <http://graphics.wsj.com/blue-feed-red-feed> and choose a topic to examine. Respond to the different feeds. What differences do you notice? How does the left feel about the issue? How does the right feel about it? Why do you think the two views are different? Be sure to include the source that the post is from in your response.

# Mapping News Sources on the Political Spectrum

Working in groups of two or three, we are going to map a variety of news sources on the political spectrum. With your partner(s), draw a political spectrum line on your paper. It should look like this:

